



UK Research and Innovation

Natural Environment Research Council



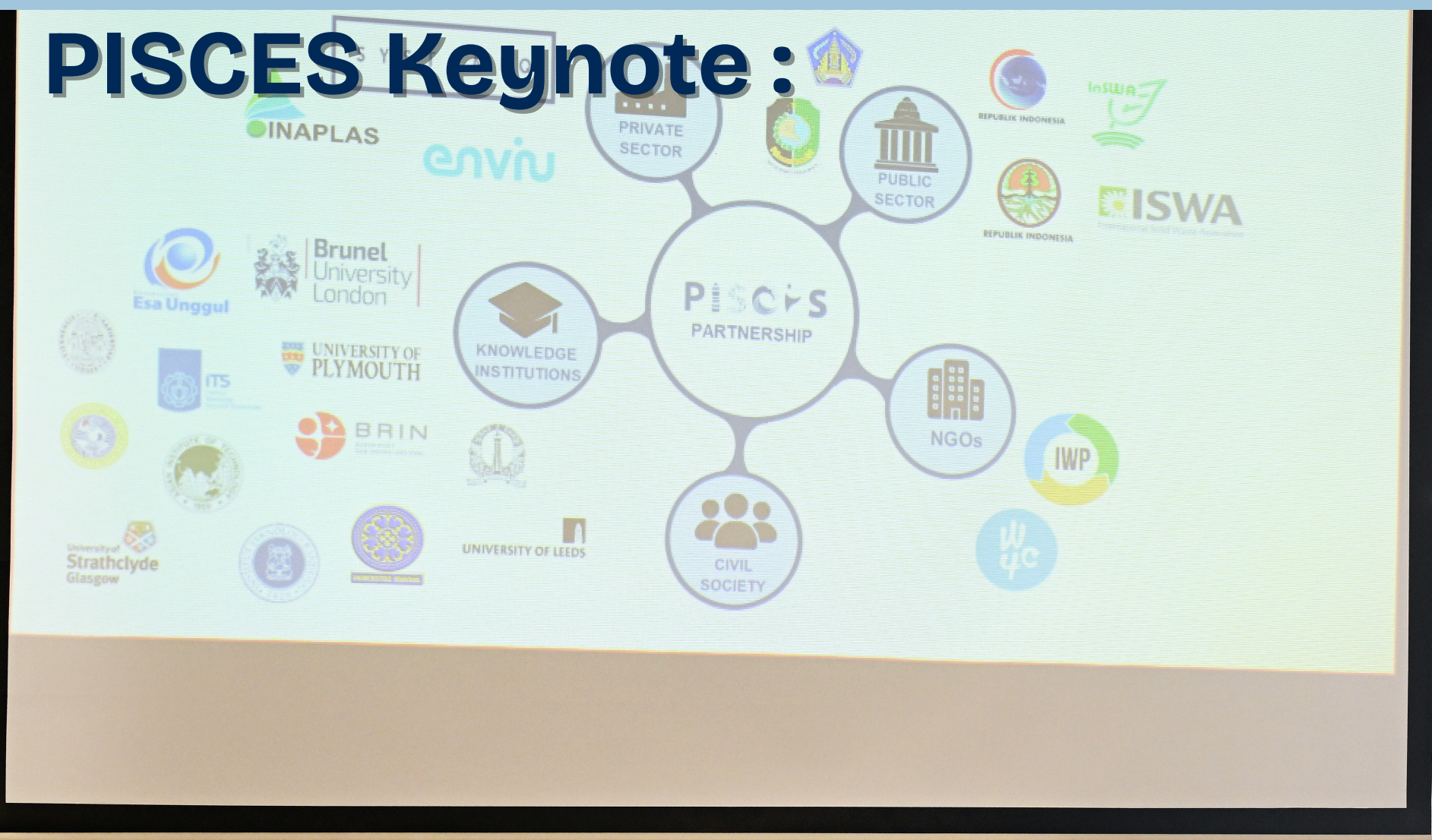
GCRF

Global Challenges Research Fund

PISCES PARTNERSHIP AT THE GCRF PLASTICS FINAL EVENT :

DRIVING IMPACT THROUGH RESEARCH AND COLLABORATION

PISCES Keynote :



Susan Jobling highlighted PISCES' major contributions, including engaging over 400 stakeholders to co-design solutions, improving national waste management data, developing state-of-the-art litter monitoring methodologies, and piloting the first-ever plastics living lab. She also emphasized PISCES' role in behavioral research, systems analysis, and policy development, showcasing how these efforts drive real-world impact.





UK Research and Innovation

Natural Environment Research Council

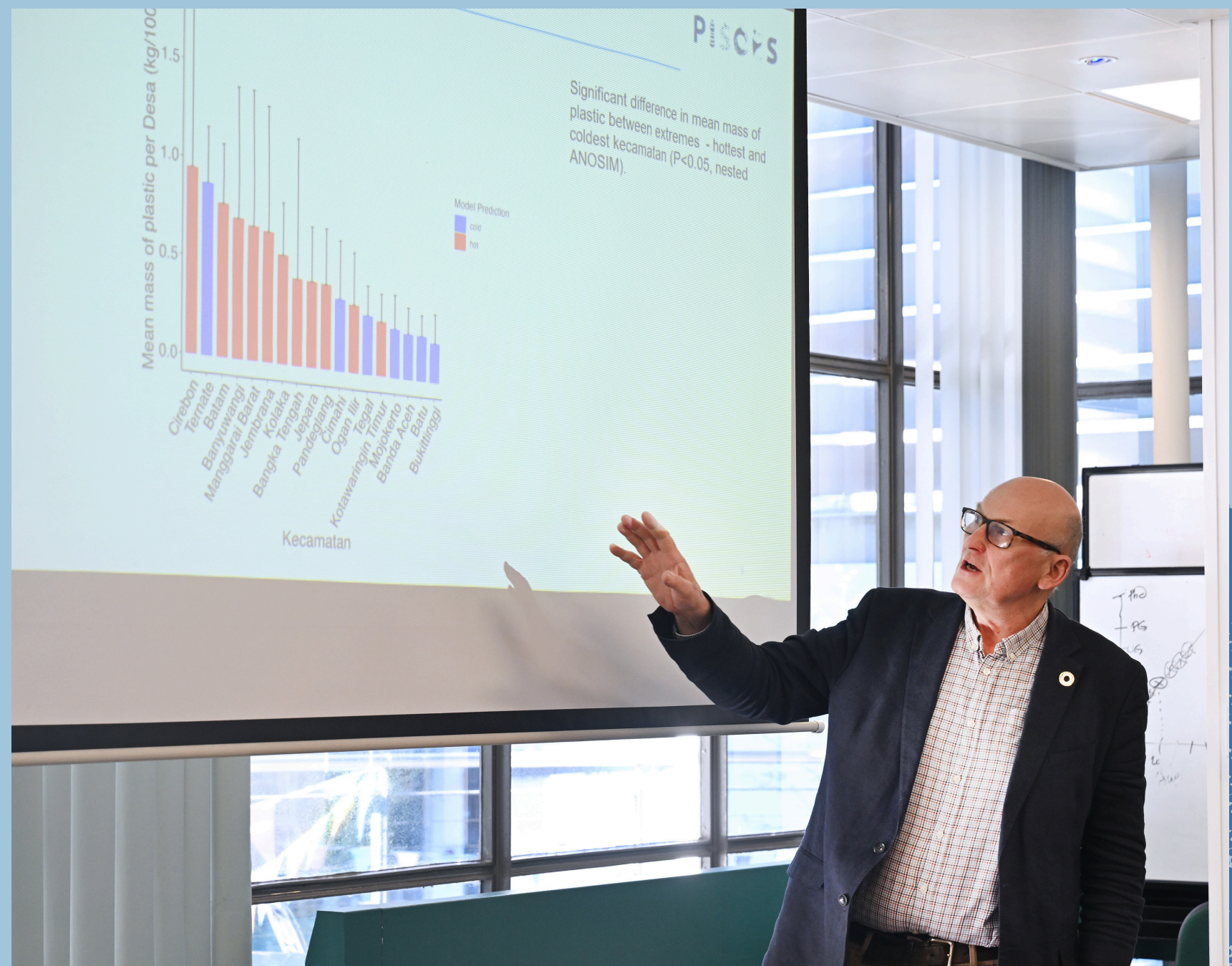


GCRF

Global Challenges Research Fund

PISCES Presentations on the Three Themes

Theme 1: Sources and Drivers of Plastic Pollution – examining plastic movement across ecosystems.



Theme 2: Impacts of Plastic Pollution – discussing the socio-economic and ecological consequences of plastic waste.





UK Research
and Innovation

Natural Environment Research Council



GCRF

Global Challenges
Research Fund

Theme 3: Interventions and Mitigation Strategies –A living lab approach to co-design and test interventions to tackle plastic pollution



The Living Lab is a dynamic research and innovation infrastructure designed to tackle plastic pollution through an interdisciplinary, cross-value chain approach involving multiple stakeholders. It focuses on co-designing and testing solutions, providing scientific evidence of their benefits, and driving a paradigm shift in practices at local (Banyuwangi) and national (Indonesia) levels.



UK Research and Innovation

Natural Environment Research Council



GCRF

Global Challenges Research Fund

PISCES FILM:

INDONESIA UNWRAPPED: A PLASTIC PARADISE

The film follows a dedicated team of PISCES researchers and partners working to combat Plastic Pollution in Indonesia. Through powerful visuals and firsthand accounts, it highlights their collaborative efforts to create tailored solutions, blending scientific research, local knowledge, and community engagement to address this urgent environmental challenge. Each scene underscores the determination and creativity needed to drive meaningful change



Brunel
University of London



University of Exeter

UNIVERSITY of STIRLING





UK Research and Innovation

Natural Environment Research Council



GCRF

Global Challenges Research Fund

Policy-Focused Discussions and Workshops

The policy session highlighted the importance of an inclusive stakeholder network in addressing poor governance and overcoming financial sustainability and accountability challenges. Key strategies include shifting social norms and strengthening the informal recycling sector, which, with proper funding and technical support, can greatly improve waste collection and management efficiency





UK Research and Innovation

Natural Environment Research Council

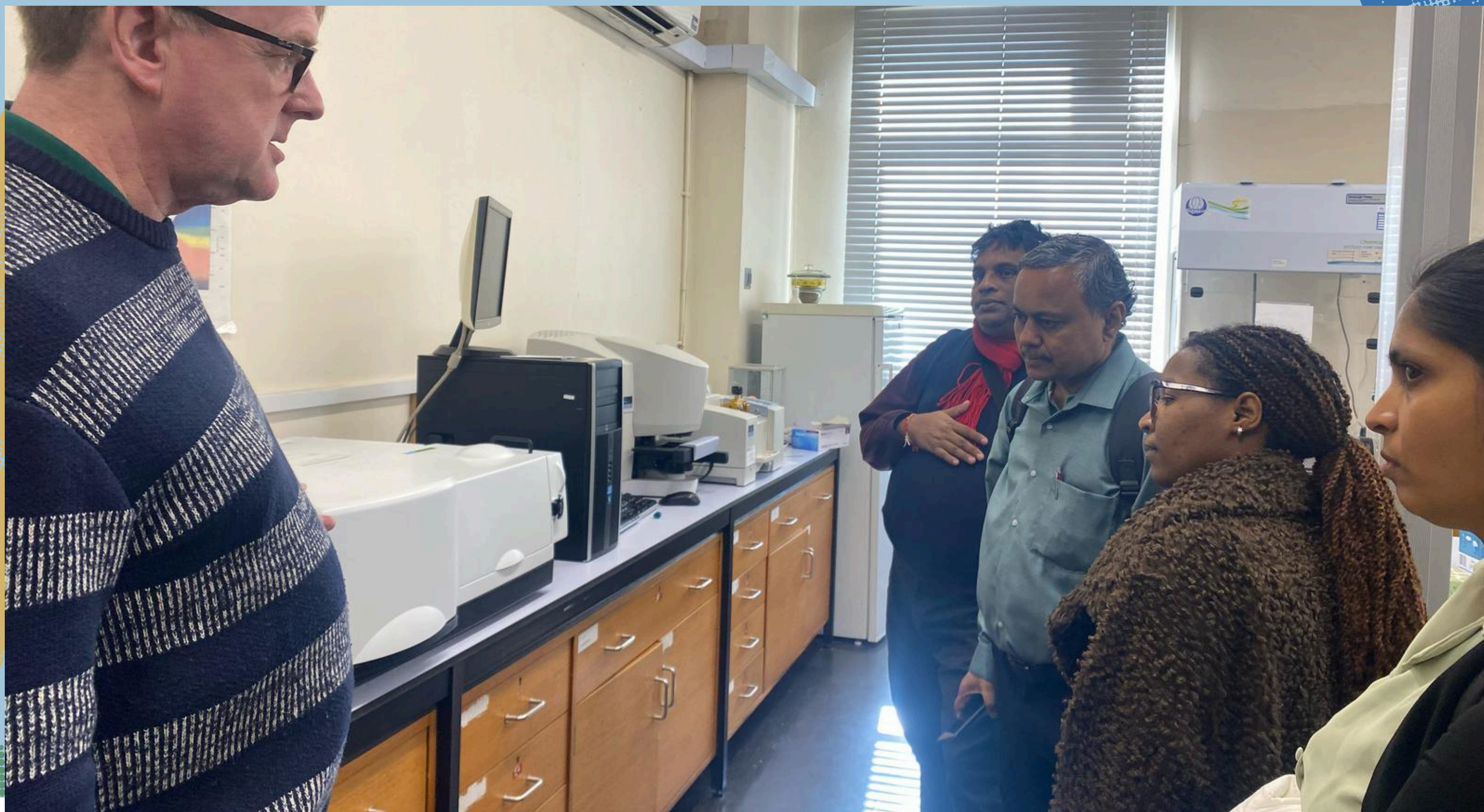


GCRF

Global Challenges Research Fund

Collaboration, Networking, and ETC Tour

A visit to Brunel University's Experimental Techniques Centre (ETC), gaining insights into the cutting-edge methodologies used in microplastic research



Brunel University of London



University of Exeter

UNIVERSITY of STIRLING





UK Research and Innovation

Natural Environment Research Council



GCRF

Global Challenges Research Fund



Brunel University of London



University of Exeter

UNIVERSITY of STIRLING

